

CORPORATE DASHBOARD

REPORTS

(SCHOOLS)

2014/15 - QUARTER 1

(APRIL-JUNE)

QUARTER 1 2014/15 DASHBOARD

HEADCOUNT AND FULL TIME EQUIVALENT (FTE) - SCHOOLS

TOTAL HEADCOUNT

3,635

2013/14 - Q1 **3,486** Increase of **149 people (-4.3%)** 2014/15 - Q1 **3,635**

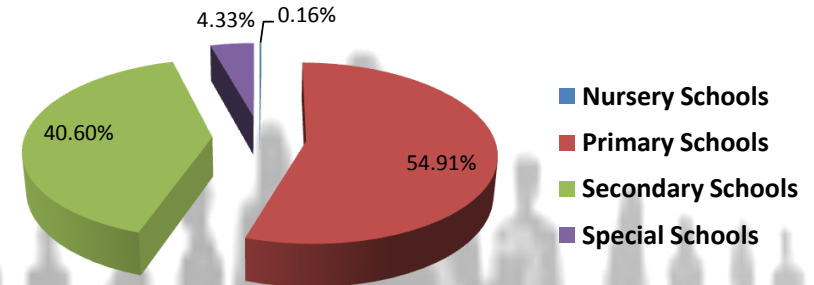
TOTAL FTE

2,473

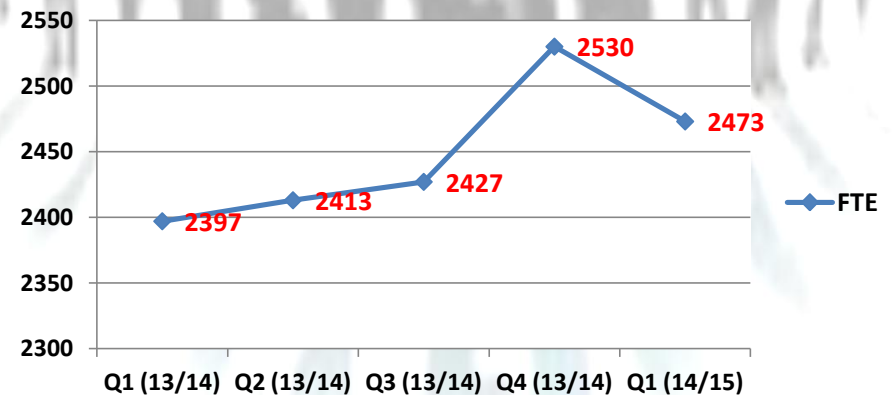
2013/14 - Q1 **2,397** Increase of **76 FTE (+3.2%)** 2014/15 - Q1 **2,473**

FTE % BY DIRECTORATE

2014/15 - Q1



TOTAL FTE Q1 TREND



QUARTER 1 2014/15 DASHBOARD

EQUALITY AND DIVERSITY - SCHOOLS

GENDER BREAKDOWN

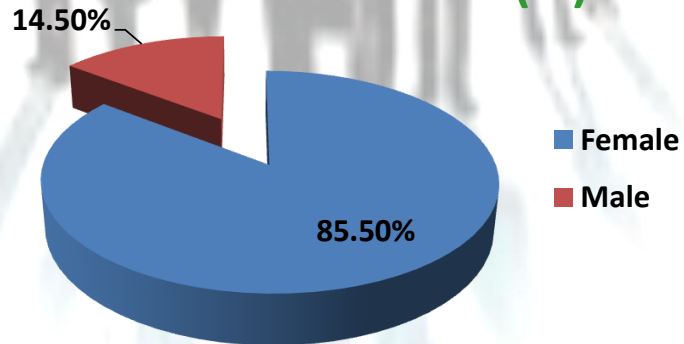
MALE

527
(15.50%)

FEMALE

3,108
(85.50%)

GENDER BREAKDOWN (%)



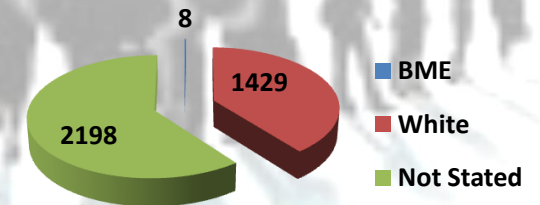
ETHNICITY

BME - 8

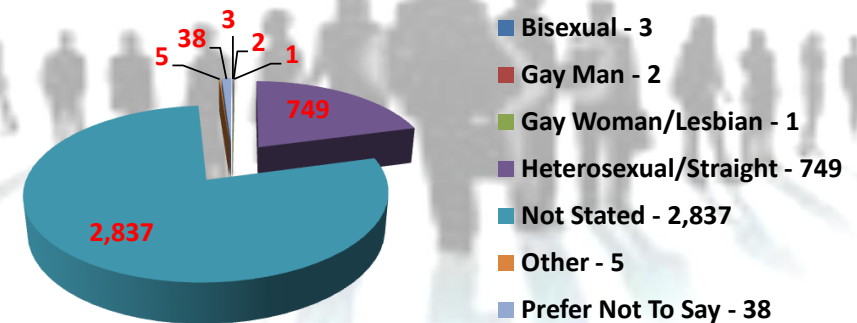
WHITE - 2,198

NOT STATED - 1,429

ETHNICITY BREAKDOWN (%)

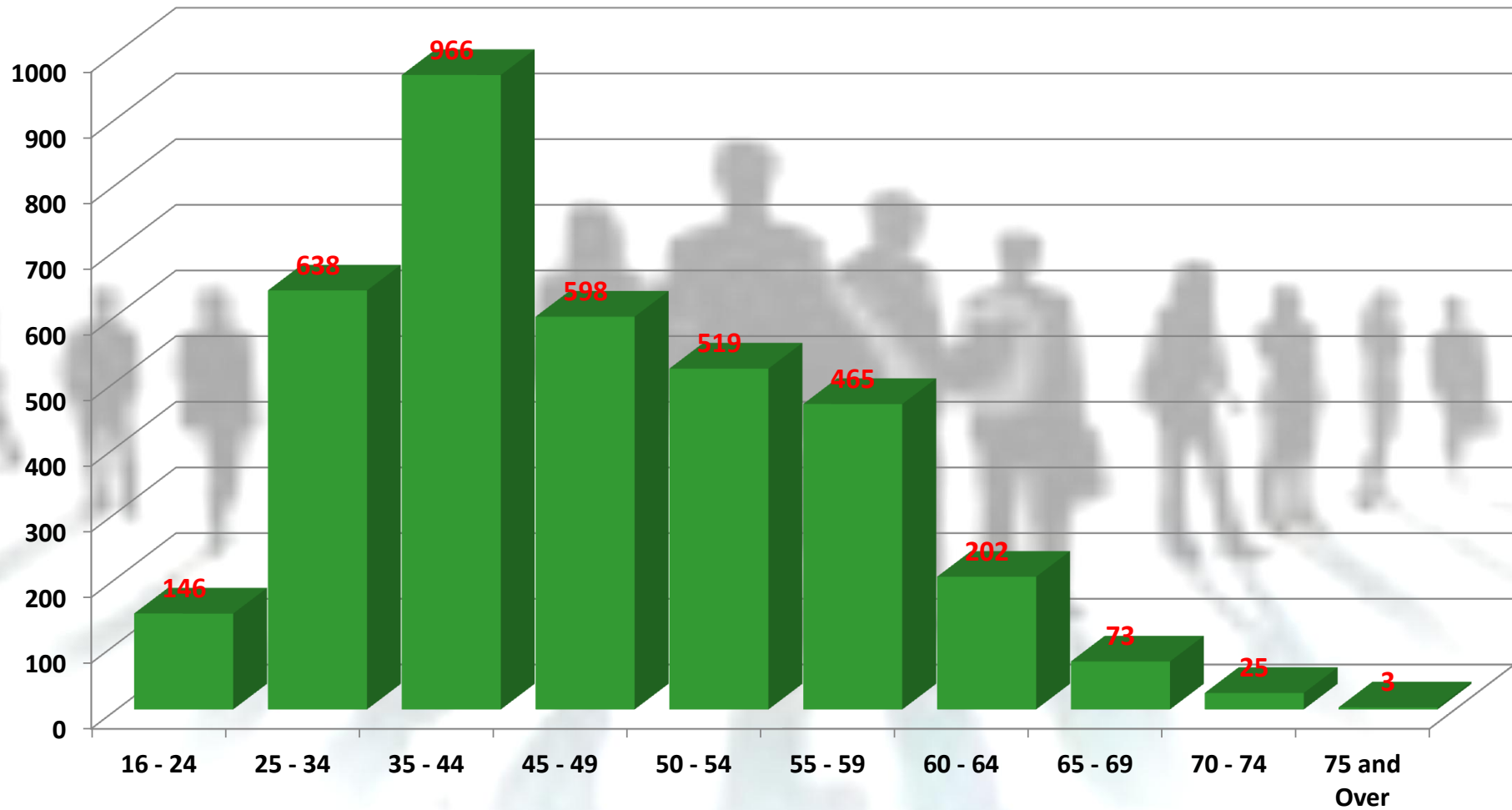


SEXUAL ORIENTATION



QUARTER 1 2014/15 DASHBOARD

AGE PROFILE - SCHOOLS



QUARTER 1 2014/15 DASHBOARD

TURNOVER AND STABILITY - SCHOOLS

LEAVERS

52

TURNOVER %

1.43%

2013/14 - Q1 1.32% Increase of +.011% 2014/15 - Q1 1.43%

TOP 3 REASONS

1. REDUNDANCY
2. PERSONAL REASONS/CAREER DEVELOPMENT
3. RETIREMENT

REDUNDANCY BREAKDOWN

VOLUNTARY

1

COMPULSORY

2

QUARTER 1 2014/15 DASHBOARD

ATTENDANCE - SCHOOLS

DAYS LOST PER FTE

1.70

2013/14 - Q1

2.18

Decrease of 0.48

2014/15 - Q1

1.70

ANNUAL
TARGET

9.60

ANNUAL
FORECAST

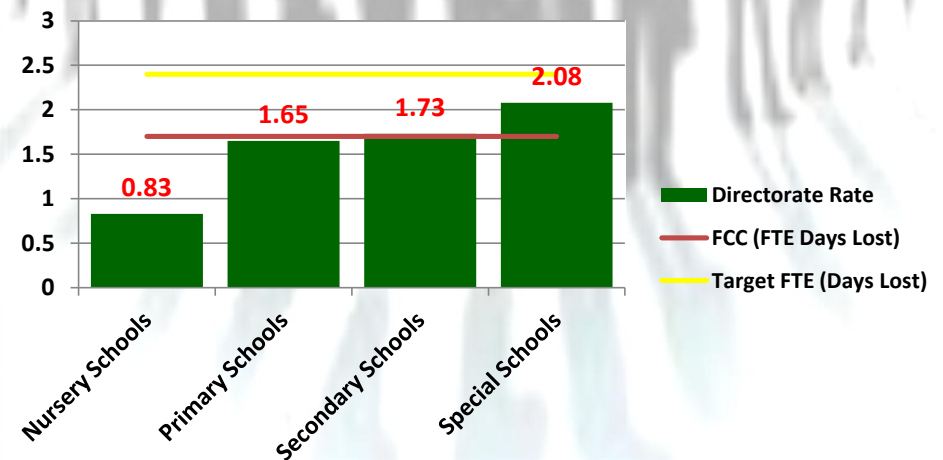
6.79

TOP 4 REASONS

1. STRESS, DEPRESSION: MENTAL HEALTH
2. MUSCULOSKELETAL
3. INFECTIONS
4. STOMACH, LIVER: VOMITING

FTE DAYS LOST BY SCHOOLS

2014/15 - Q1

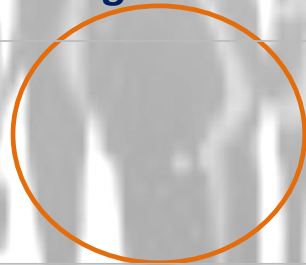


QUARTER 1 2014/15 DASHBOARD

WORKFORCE DEVELOPMENT AND PERFORMANCE - SCHOOLS

DEVELOPMENT PROGRAMMES

Employees on Development
Programmes



**DATA TO BE PROVIDED IN
FUTURE REPORTS**

PERFORMANCE APPRAISALS

Flintshire County Council



**DATA TO BE PROVIDED IN
FUTURE REPORTS**